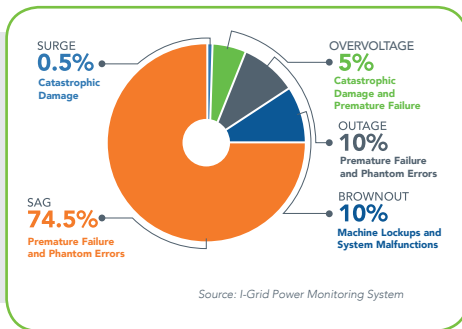


Innovolt SmartProtect Plus

Intelligent power protection and real-time data analytics proven to reduce service calls and increase uptime.

Innovolt SmartProtect Plus is the industry's most effective way to manage power protection for your fleet. SmartProtect Plus offers the same industry-leading power protection and data capture as our SmartProtect solution and additionally offers real-time fleet visibility and control. **Featuring built-in secure Ethernet connectivity (no separate box required)**, SmartProtect Plus automatically reports power profile data to our Innovolt Management Cloud (IMC), enabling more timely alerts and action for persistent trouble sites. **Ethernet connectivity also enables Remote Power Cycling, which can help clear up certain issues without dispatching a technician.**



INDUSTRY-LEADING CORE PROTECTION

- Patented Core Protection of the 5 major power disturbances, including protection against Voltage Sags and resulting damaging current inrush
- Superior protection of connected equipment; AC Line, Tele/Fax, Network Surge Protection

COMBINED WITH DATA ANALYTICS AND REAL TIME CONNECTIVITY

- Power Disturbance Data Collection via Ethernet (no need for additional hardware)
- Remote Power Cycle
- Disturbance Event Recording / Date and Time Stamping
- Cloud-Based Dashboard enables users to view aggregated fleet-wide power data in a centralized location (no need to view each separate machine)
- Download reports to correlate power anomalies with error codes
- Customizable Email Alerts for around the clock power profile analysis

ENHANCED POWER PROTECTION

- Filtering of High Frequency Neutral to Ground and EMI/RFI Line
- Neutral Earth Voltage Detection

SMARTPROTECT PLUS BENEFITS FOR YOUR BUSINESS

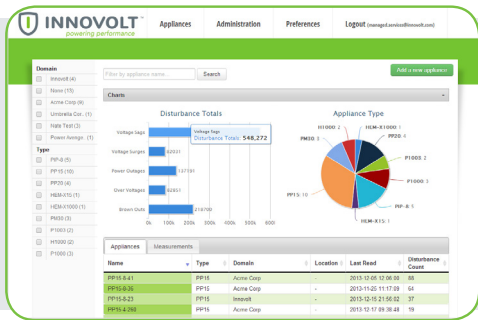
- Increased productivity, equipment reliability and lifespan
- Reduced service calls; fewer truck rolls
- Visibility and control with fleet-wide management
- Remote Power Cycle; fewer technician dispatches

DATA INSIGHTS TO INCREASE EFFECTIVENESS

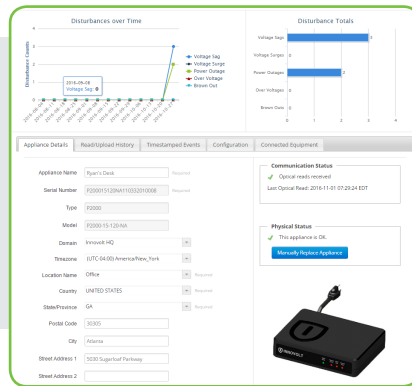
Innovolt SmartProtect Plus provides fleet-wide aggregation and analytics through a web-based power event dashboard complementary to existing diagnostic and troubleshooting tools. The solution provides valuable insight into the power environment of your electronic assets and allows those devices to be remotely restarted from the dashboard.

The Innovolt Management Cloud (IMC) serves as a central aggregation point of data, analytics and control. No other power protection company provides this capability. The IMC is the repository for all power profile data collected, whether via Ethernet or optical reads using our Smartphone apps and readers. With SmartProtect Plus technicians can

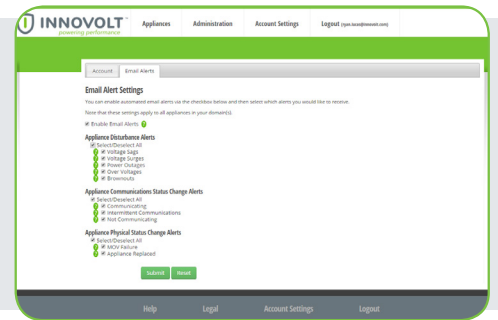
- Run initial diagnostics before dispatching a technician,
- Correlate service requests or outages with disturbances,
- Identify trends in service requests or outages due to disturbances, and
- Proactively predict future breakdowns due to certain kinds and frequency of disturbances instead of reacting.



Main Fleet View



Appliance Details



Customizable Email Alerts

The IMC is a clear combination of two of Innovolt’s core values- Innovation and Collaboration. We have taken feedback from our large office equipment customers and creatively designed an intuitive software suite to allow for replication, expansion and enhancement. The IMC is constantly evolving and can easily be enhanced for additional functionality and to integrate with other software tools.

MODELS

SmartProtect Plus 15
P2503-15

- Date and Time Stamping
- High Frequency EMI/RFI Line Filter
- Neutral Earth Voltage Detection
- High Frequency Neutral to Ground Filter


SPECIFICATIONS:

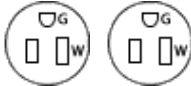
TEL / DATA:

PARAMETER	TEL	DATA
Connector	RJ11	RJ45
Clamping Voltage	180V	8.5V
Protected Lines	3-4	1-2, 3-6, 4-5, 7-8

ELECTRICAL:

PARAMETER	P2503-15-120
Nominal Operating Voltage	120 Vac, 60 Hz
Over Voltage Limit	>145 Vac
Under Voltage Limit	<88 Vac
Maximum Continuous Current	15 A
Voltage Surge per UL 1449	500 Vac L-N
	500 Vac L-G
	500 Vac N-G

PLUG: 

RECEPTACLES: 

SmartProtect Plus 20
P2503-20

- Date and Time Stamping
- High Frequency EMI/RFI Line Filter
- Neutral Earth Voltage Detection
- High Frequency Neutral to Ground Filter


SPECIFICATIONS:

TEL / DATA:

PARAMETER	TEL	DATA
Connector	RJ11	RJ45
Clamping Voltage	180V	8.5V
Protected Lines	3-4	1-2, 3-6, 4-5, 7-8

ELECTRICAL:

PARAMETER	P2503-20-120
Nominal Operating Voltage	120 Vac, 60 Hz
Over Voltage Limit	>145 Vac
Under Voltage Limit	<88 Vac
Maximum Continuous Current	20 A
Voltage Surge per UL 1449	500 Vac L-N
	500 Vac L-G
	500 Vac N-G

PLUG: 

RECEPTACLES: 